



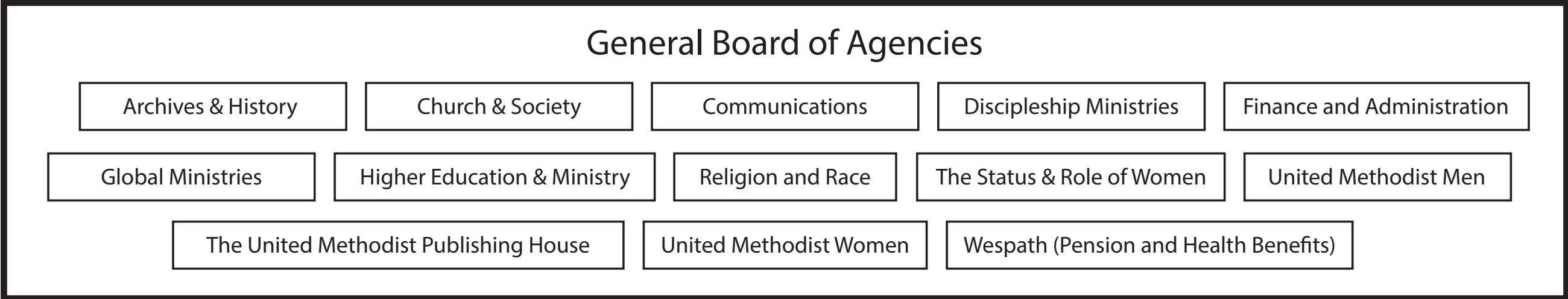
The Future of Methodism; The Future of St. Luke's

Dr. Bob Long and Rev. Wendy Lambert

Council of Bishop

General Conference

Judicial Council



5 Jurisdictional Conferences
Elects Bishops

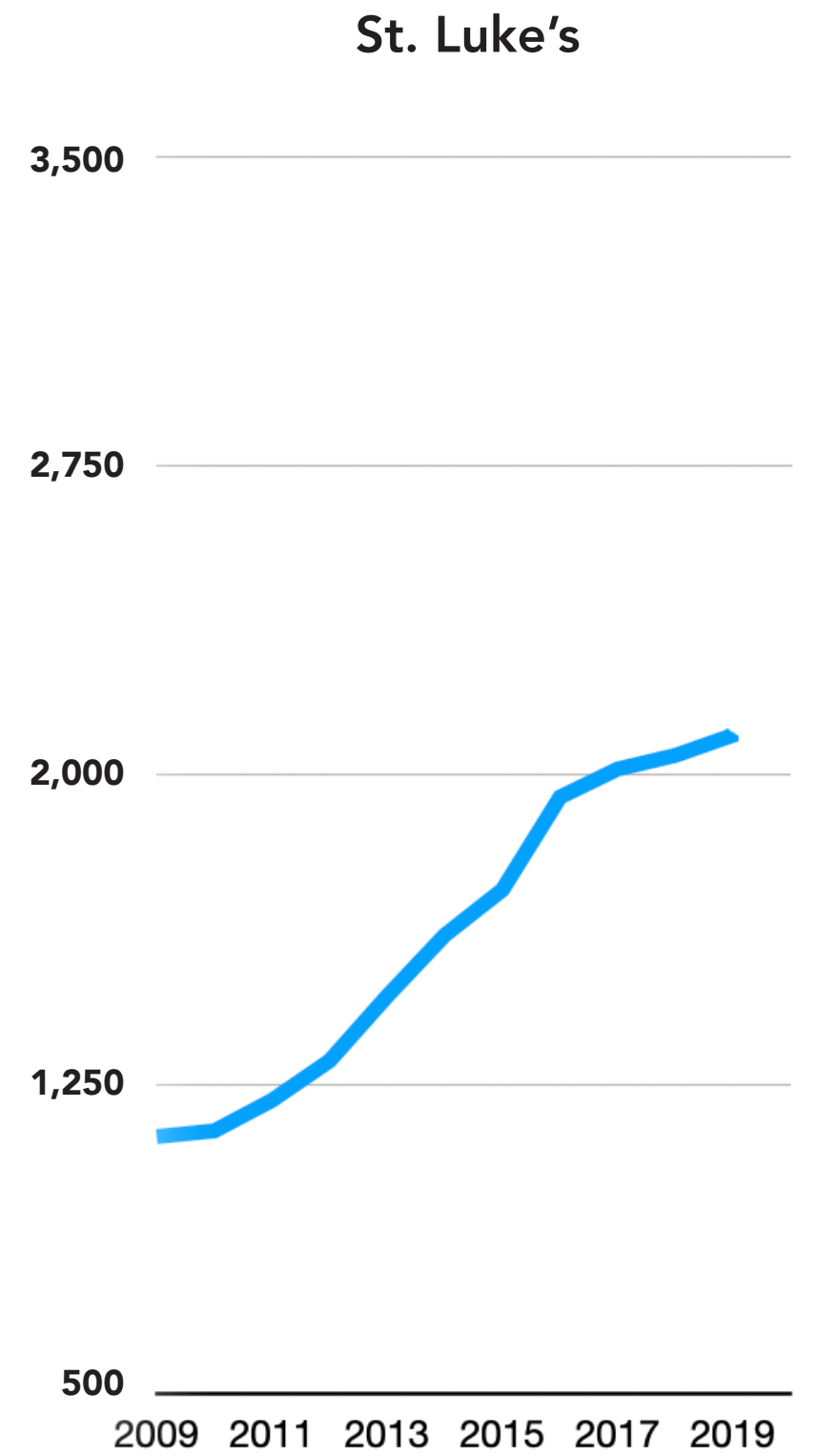
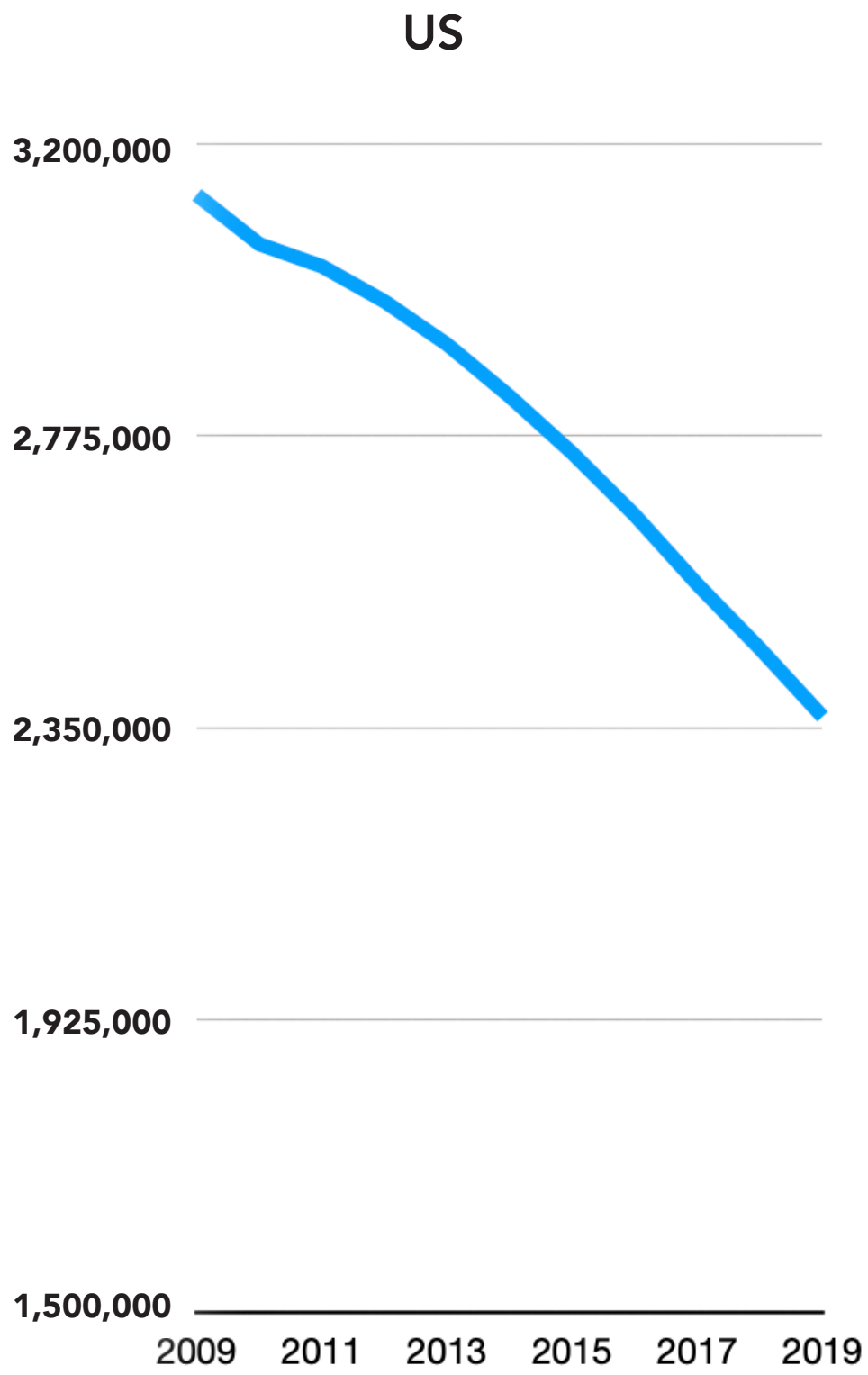
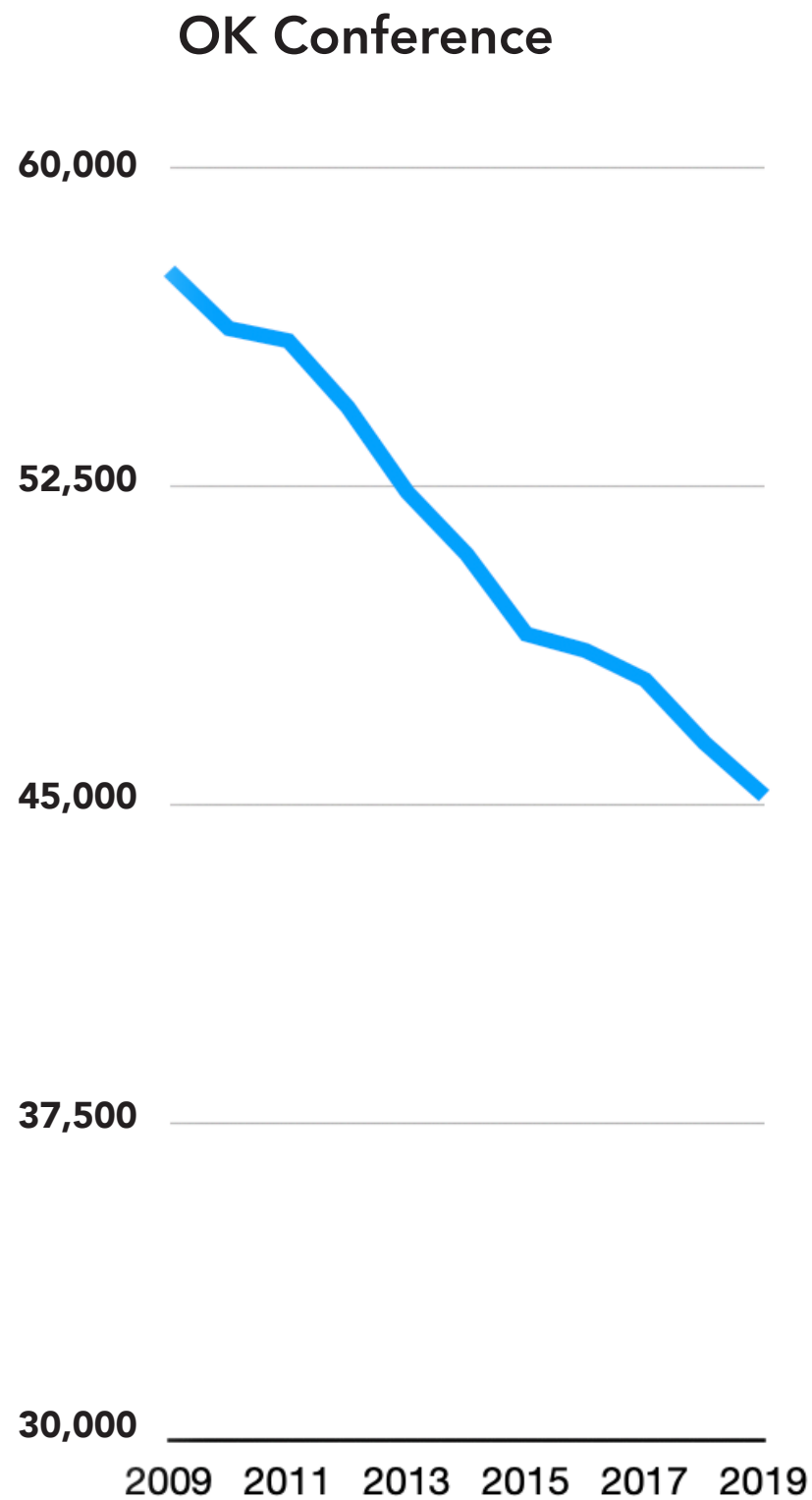
53 Annual Conferences
Led by Bishop

8 Oklahoma Districts
Led by District Superintendent

462 Local Churches in Oklahoma
St. Luke's

Between 1974 and 2002, we lost an average of 4,720 in worship attendance per year," said Dr. Don House, a professional economist and former chair of GCFA's Economic Advisory Committee. "But a major shift occurred in 2002. The rate skyrocketed to an annual rate of 52,383 between 2002 and 2012, and now we've seen losses of 62,571 (2012-2013), 75,671 (2013-2014), and 82,313 between 2014 and 2015. This is not sustainable."

Methodist Church Attendance



Question 1

Will the UMC restructure itself to be financially viable and more effective in the present day?

St. Luke's Apportionments

Conference Mission and Ministry

2022 - \$527,450

2021 - \$439,869

2019 - \$347,531

St. Luke's Total Askings

2022 - \$615,170

2019 - \$413,431

Total Increase of 49%

Question 2

Will we change the Discipline so clergy will have the option of whether or not to do same sex weddings?

Compatible

Incompatible

Incompatible

Progressive

Traditionalist

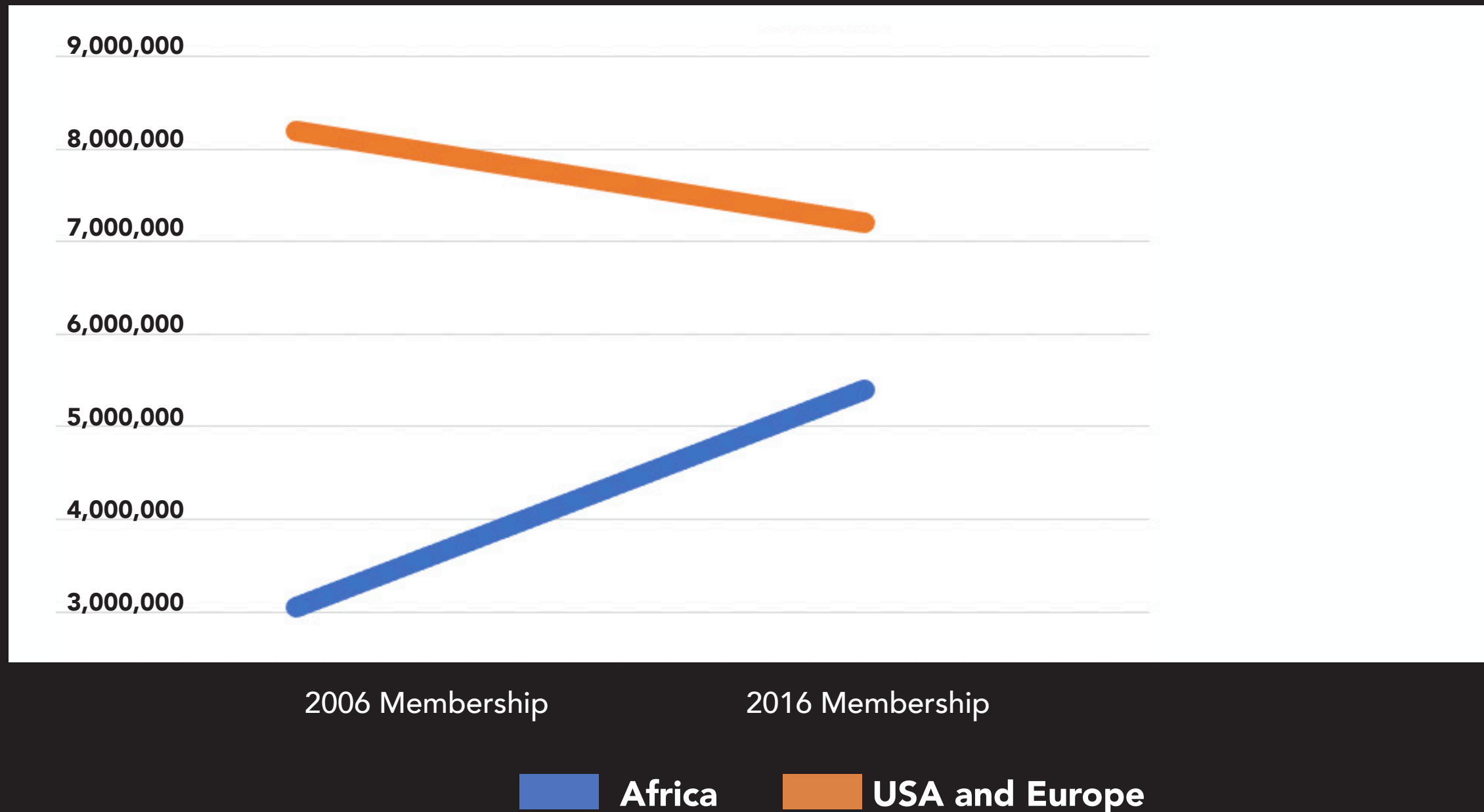
Question 3

What will happen after December 31, 2023 when paragraph 2553 expires?

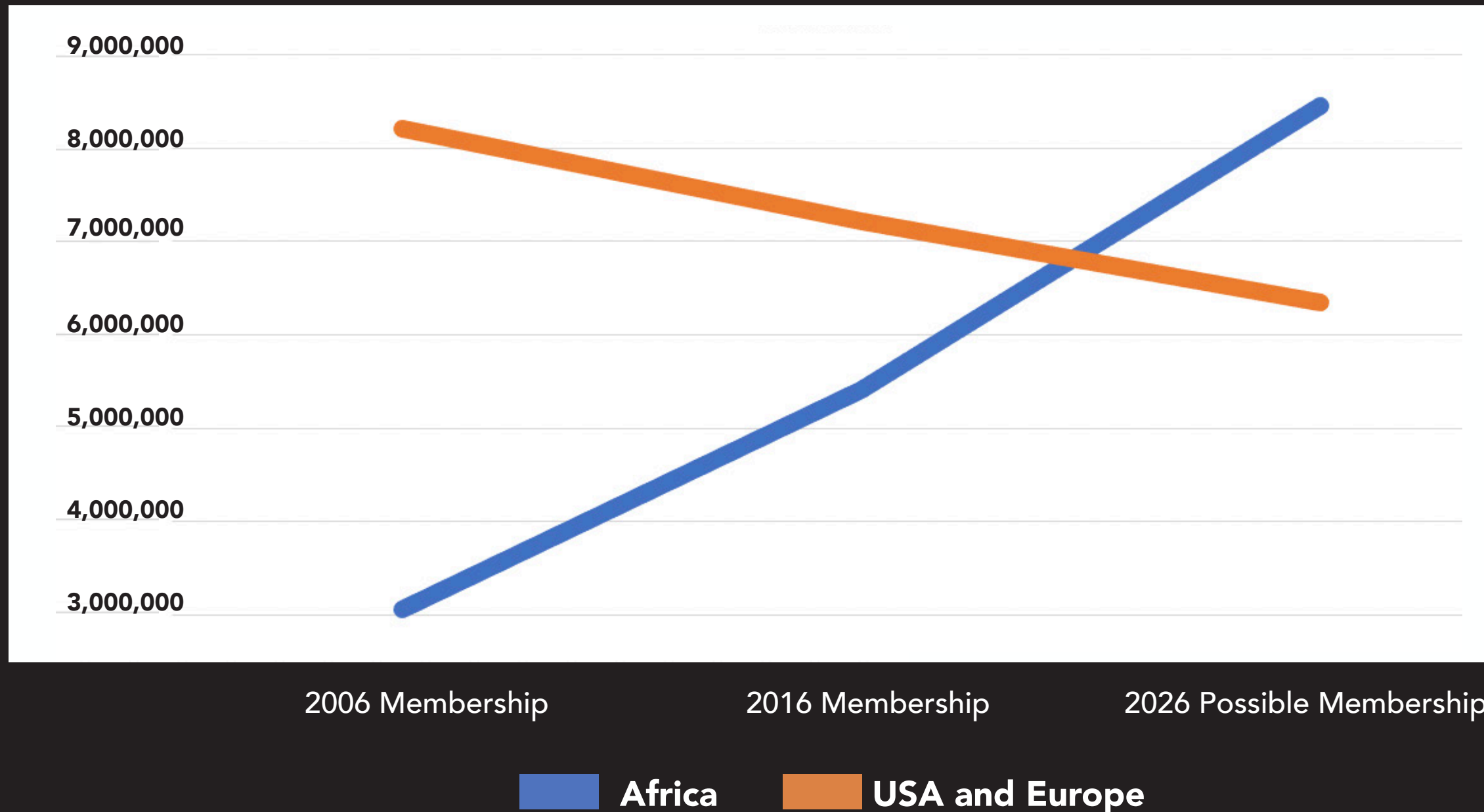
Methodist Membership

	2006 Membership	2016 Membership	10-Year Change	10-Yer % Change
Africa Central	374,090	623,138	249,048	67%
Congo	1,216,257	2,999,242	1,782,985	147%
West Africa	1,462,457	1,779,958	317,501	22%
Central and Sourthern Europe	18,410	14,267	(4,143)	-23%
Germany	34,900	29,657	(5,243)	-15%
Northern Europe and Eurasia	15,731	9,888	(5,843)	-37%
Philippines	201,309	207,190	5,881	3%
United States	7,931,733	6,951,278	(980,455)	-12%
Total	11,254,887	12,614,618	1,359,731	12%

Methodist Membership



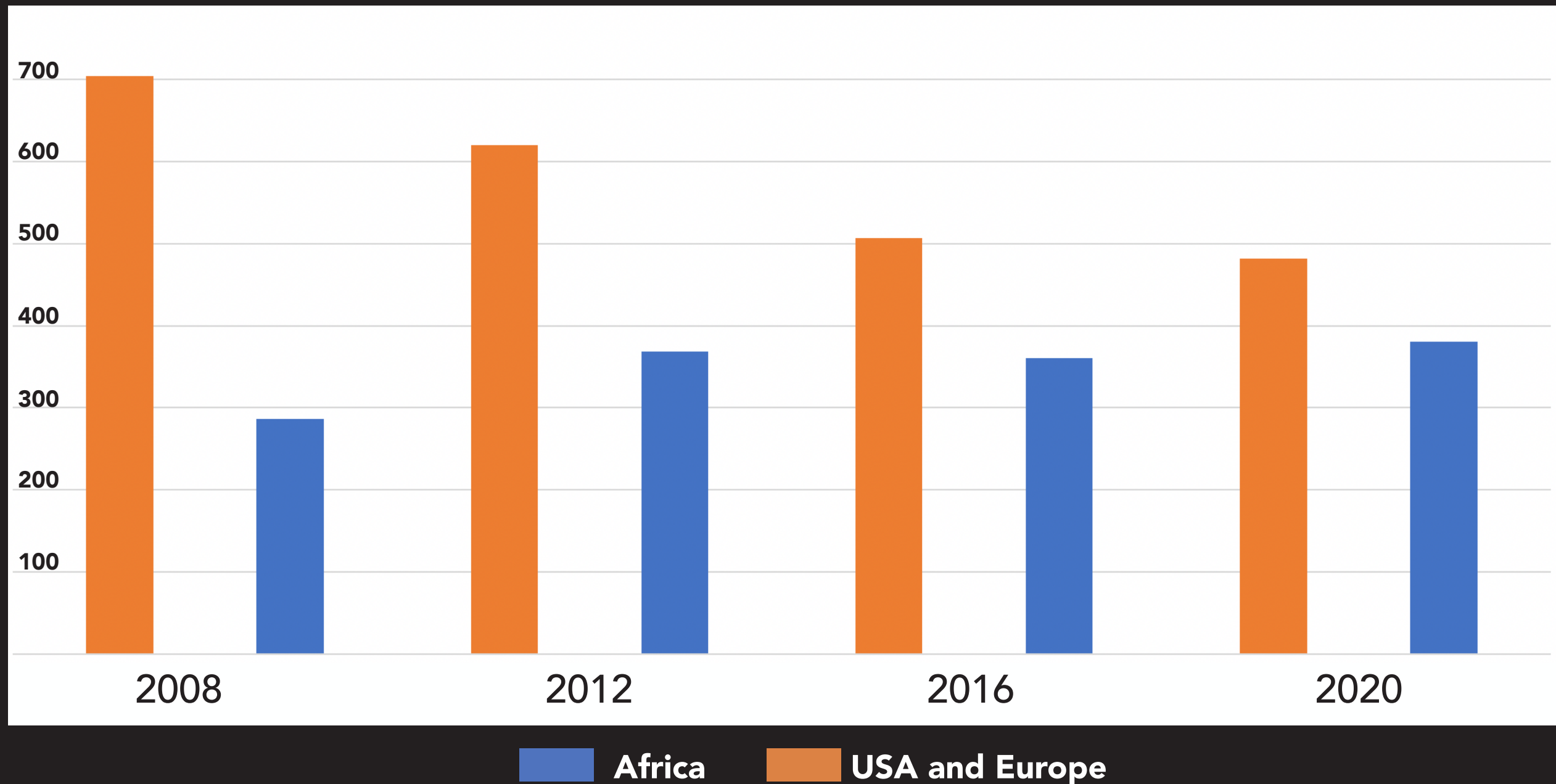
Methodist Membership Prediction



General Conference Delegates

UMC General Conference	US Delegates	US Delegates	Central Delegates	Central Delegates	Total Delegates
2008	704	71%	286	29%	990
2012	620	63%	368	37%	988
2016	507	58%	360	42%	864
2020	482	56%	380	44%	862
2024					

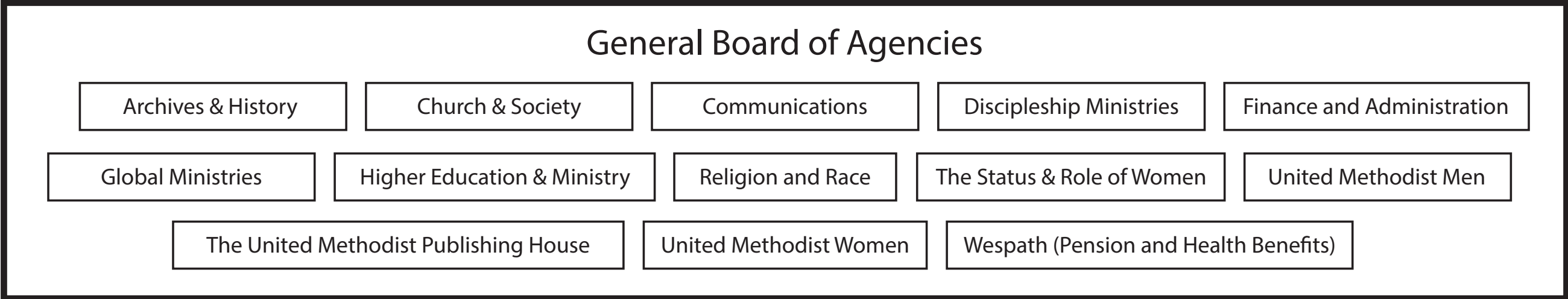
General Conference Delegates



Council of Bishop

General Conference

Judicial Council



5 Jurisdictional Conferences
Elects Bishops

53 Annual Conferences
Led by Bishop

8 Oklahoma Districts
Led by District Superintendent

462 Local Churches in Oklahoma
St. Luke's